

Installation Instructions

# Skyline Series Light System



# Contents

- Introduction ..... 3
- General Information ..... 3
- Drawings and Dimensions ..... 4
- Included components / parts ..... 5
- Installing the Skyline Light
  - Mounting the Hanging Bracket ..... 6
  - Installing the Fixture ..... 7
  - Installing the Lamps ..... 10
- Wiring Diagram ..... 11

# Introduction

Thank you for purchasing the Skyline overbed light. Incorporating the latest technology the Skyline light is designed to provide high quality illumination while meeting the aesthetic requirements of the patient room.

The installation provided are for the Amico standard products.

## General Information

### WARNING

The installation of the light shall be in accordance with the local building code and the (NEC) National Electrical Code.

In Canada the lights shall be installed according to the (CEC) Canadian Electrical Code requirements.

Failure to install the light in accordance with these requirements may cause injury and equipment damage.

### WARNING

Read all the installation instructions before you install the Skyline Series Overbed Light fixture. Failure to do so could cause injury and damaged equipment.

1. Read all of the installation instructions before you install the light fixture.
2. Make sure all applicable trades persons are available for the installation of the light fixture.

### WARNING

Keep weather insulation at least 3.00" (7.62cm) from the Skyline Series Overbed Light.

Failure to do so could cause injury or damaged equipment.

### Electrical Ratings

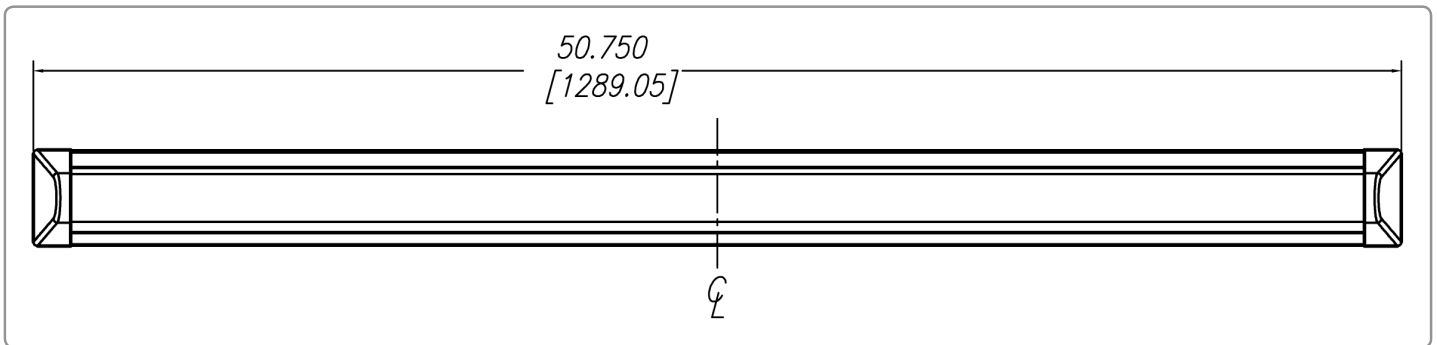
Electrical ratings (read the specified voltage value from the device label):

Line voltage:

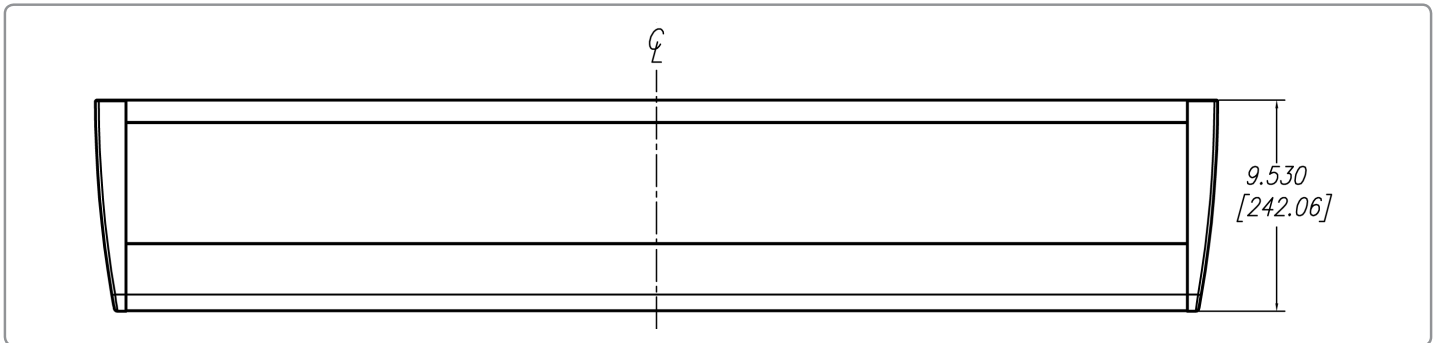
- 120V AC, 60Hz, 1.1A
- 277V AC, 60Hz, 0.476A

# Drawings and Dimensions

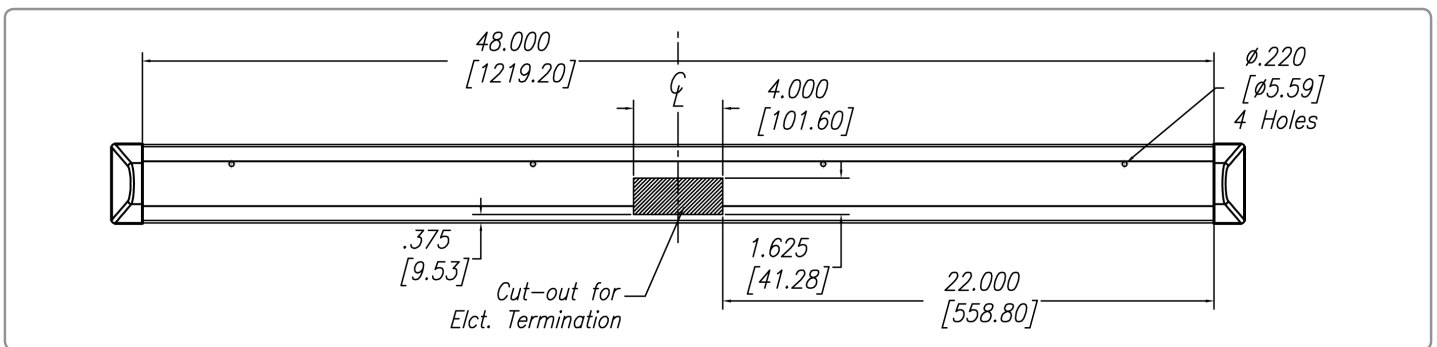
FRONT VIEW



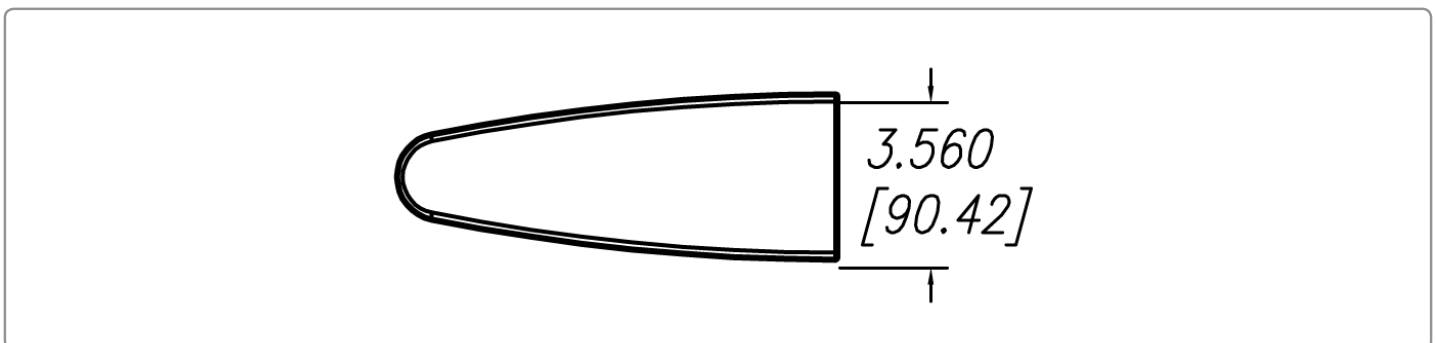
TOP VIEW



BACK VIEW



SIDE VIEW



# Included Components / Parts



**Skyline light fixture**



**Hanging Bracket**

## HARDWARE REQUIRED

For drywall - 3/16" toggle bolts

For wall studs - #10 x 1½" Phillips Pan  
Head self-drilling tek screws

## TOOLS

Screwdrivers

Tape Measure

1/2" Drill Bit

Level

Wire Stripper

3/8" Socket

# Installing the Skyline Light

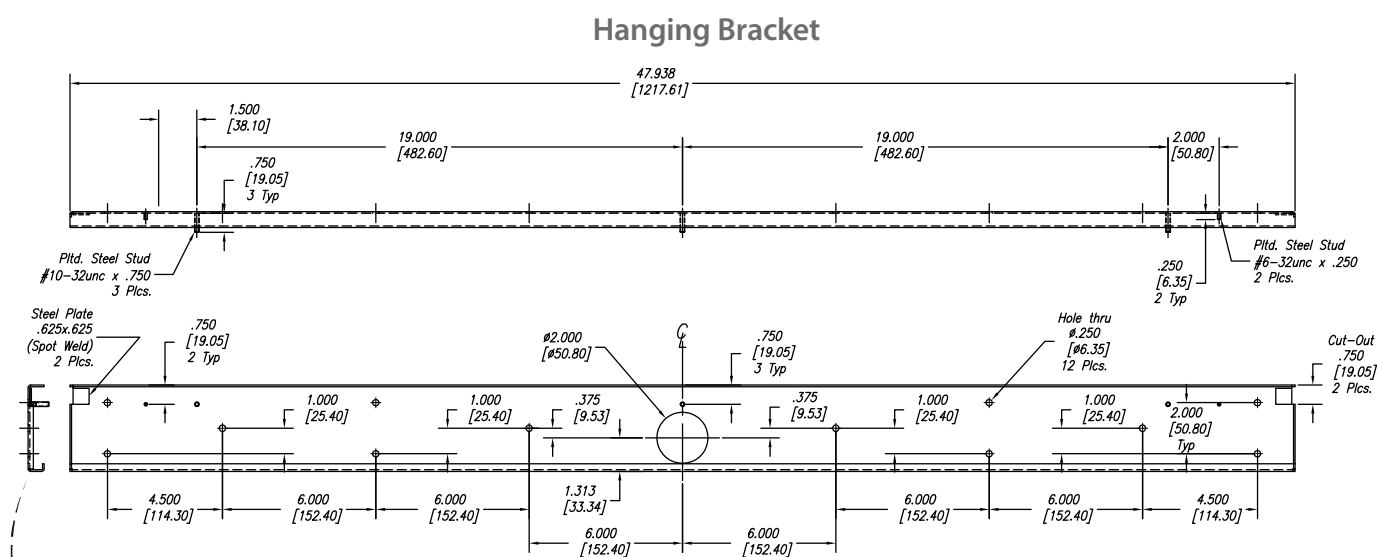
## STEP 1 Mounting the Hanging Bracket

Mounting hardware shall be provided on site by others and shall comply with the local building code.

Amico recommends the fixture to be installed at a height of 6' (1.8m) above finished floor.

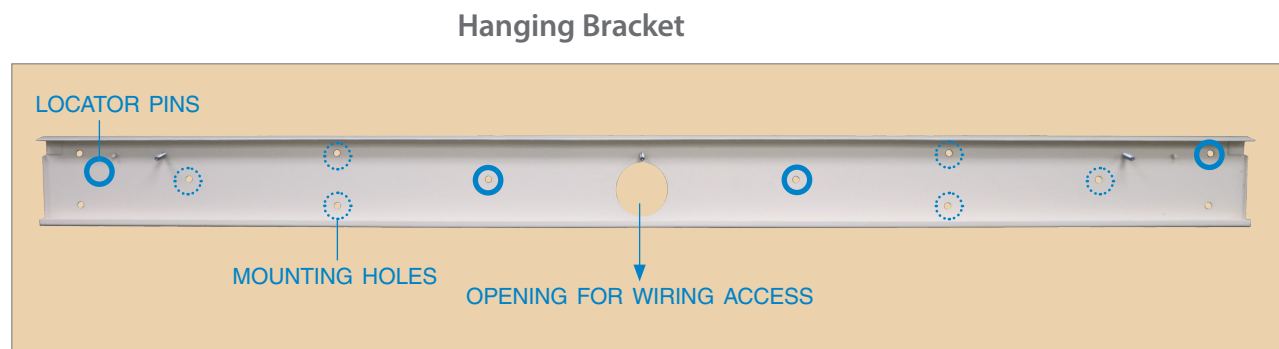
2" x 4" (5 cm x 10.2 cm) electrical box should be used for electrical terminations.

For feed opening and mounting holes dimensions refer to the drawing of the hanging bracket below.



Use the hanging bracket as a template and make a mark at the pilot holes on the mount surface. At least six mounting holes are required.

\* Must be mounted with location pins at top position.



Using a metal stud finder check if any pilot holes are aligned with a wall studs.

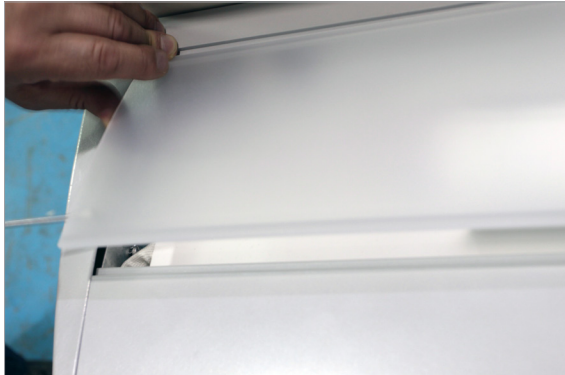
For drywall mounting use 3/16" toggle bolts to secure the back plate. The 1/2" sized holes are required in the drywall.

For wall studs mounting, Amico recommends using #10 x 1 1/2" Phillips pan head self-drilling tek screws.

# Installing the Skyline Light

## **STEP 2** Installing the Fixture

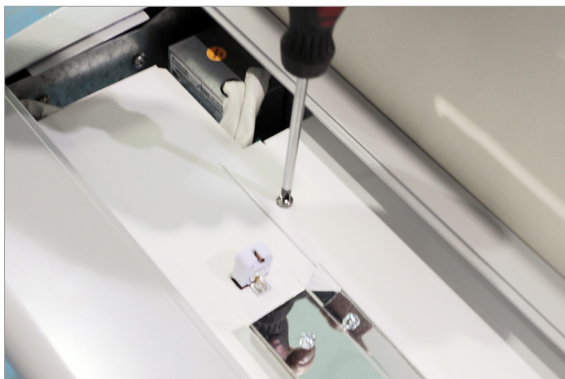
Remove the top and bottom lens.



Remove the power to the electric power supply leads before installation.

Read the specified voltage from the fixture label. Be sure the line voltage is the same.

**To gain access to the wiring compartment remove the top cover.**



# Installing the Skyline Light

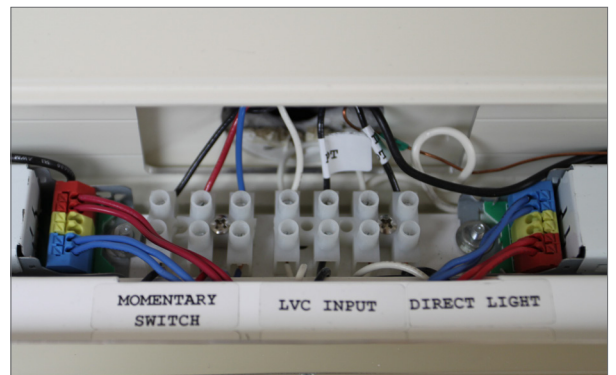
## STEP 2 Installing the Fixture (cont.)

Feed wires into the fixture via the back opening.

Attach the fixture to the hanging bracket and secure with four #10 Hex Lock Nuts and four washers included with fixtures.



Make all necessary connections to the wire terminal blocks according to the wiring diagram provided with the lights, project specific. When complete, replace the cover plate.



► Replace the top cover.

Refer to wire diagrams for specific orientation.



# Installing the Skyline Light

## STEP 3 Installing the Lamps

See labels on the reflectors for the type and wattage of the lamps.



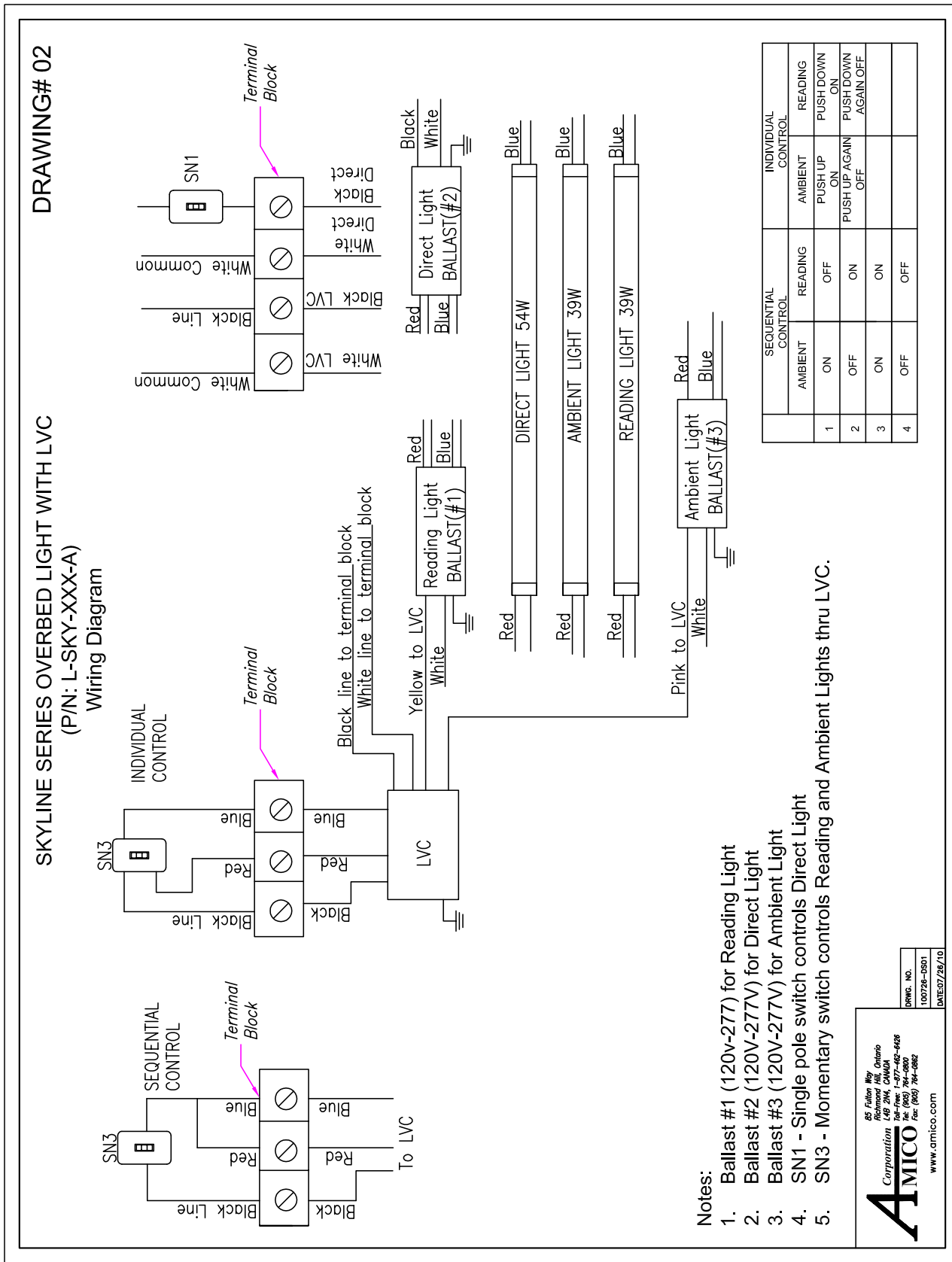
Install the lamps. Use T5HO 39W lamps for reading and ambient lights. Use T5HO 54W lamps for the direct light.

Replace the top and bottom lens.

Test light functions, making sure all features are working according to the wiring diagram.

► Replace lenses.

# Wiring Diagram



# www.amico.com

Amico Lighting Solutions | [www.amico.com](http://www.amico.com)

85 Fulton Way, Richmond Hill  
Ontario, L4B 2N4, Canada

Toll Free Tel: 1.877.264.2697

Toll Free Fax: 1.866.440.4986

Tel: 905.763.7778

Fax: 905.763.8587

Email: [info@amico.com](mailto:info@amico.com)